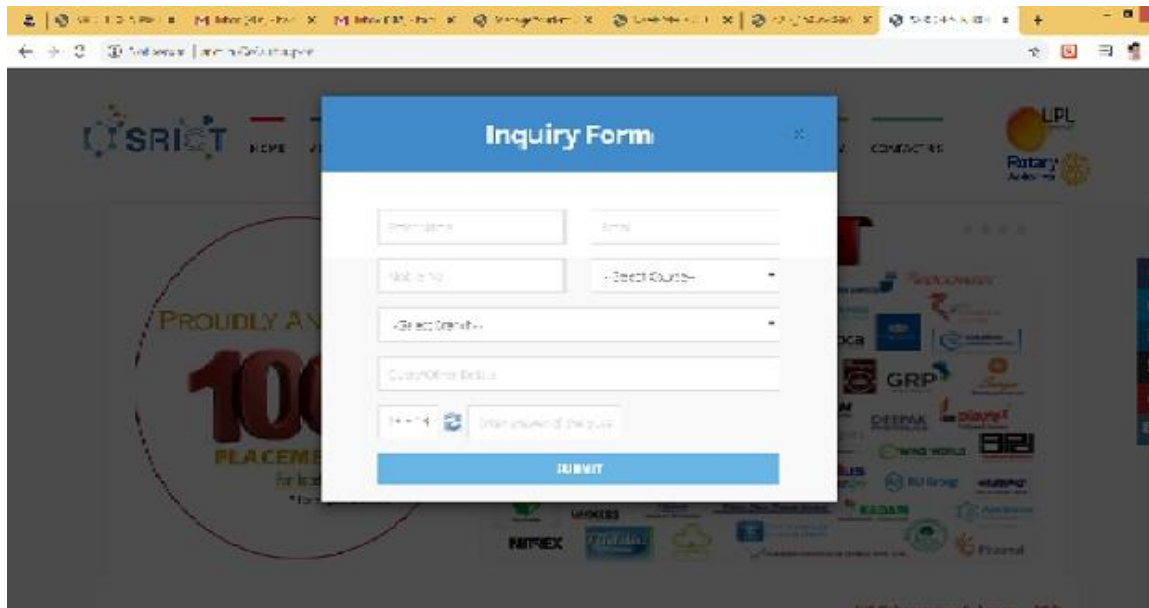


6.2.3 SCREEN SHOTS OF USER INTERFACES

STUDENT ADMISSION AND SUPPORT

Online Student Admission Enquiry Form:

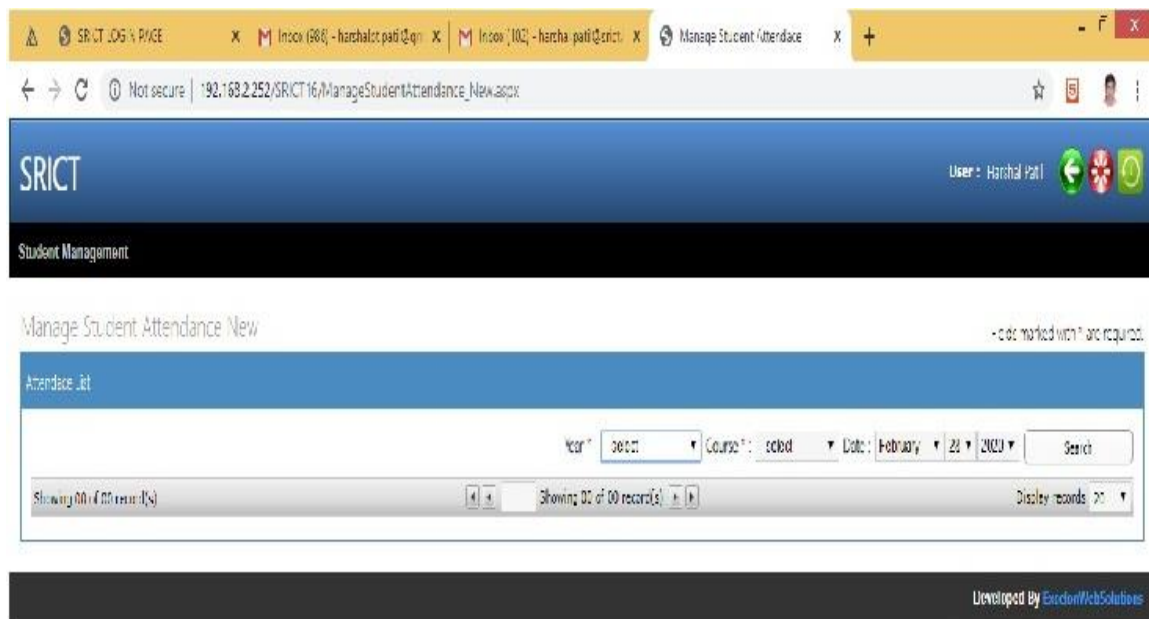


The screenshot shows a web browser window displaying an "Inquiry Form" modal. The form is titled "Inquiry Form" and contains the following fields:

- Registration No. (text input)
- Enrol. No. (text input)
- Roll No. (text input)
- Select Course (dropdown menu)
- Select Branch (dropdown menu)
- Contact No. (text input)
- Enter amount of fee due (text input)

A "SUBMIT" button is located at the bottom of the form. The background of the page shows the SRICT logo and a "100 PLACEMENTS" banner.

Online Student Attendance ERP System:



The screenshot shows a web browser window displaying the "Manage Student Attendance New" interface. The page title is "SRICT Student Management". The user is logged in as "User: Harshal Patil".

The main content area is titled "Manage Student Attendance New" and includes a search bar with the following fields:

- Year: 2021 (dropdown menu)
- Course: sctsd (dropdown menu)
- Date: February 28, 2021 (dropdown menu)
- Search button

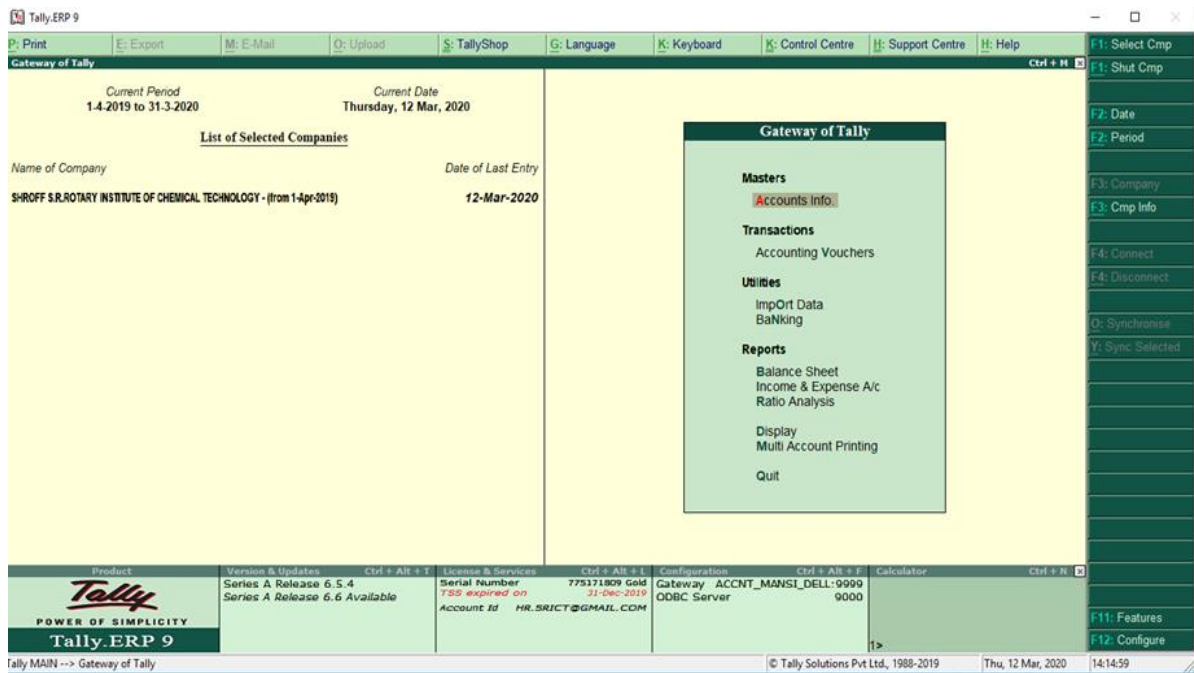
Below the search bar, there is a table with the following information:

- Showing 00 of 00 record(s)
- Showing 00 of 00 record(s)
- Display records per page (dropdown menu)

The footer of the page indicates "Developed By ExedonWebSolutions".

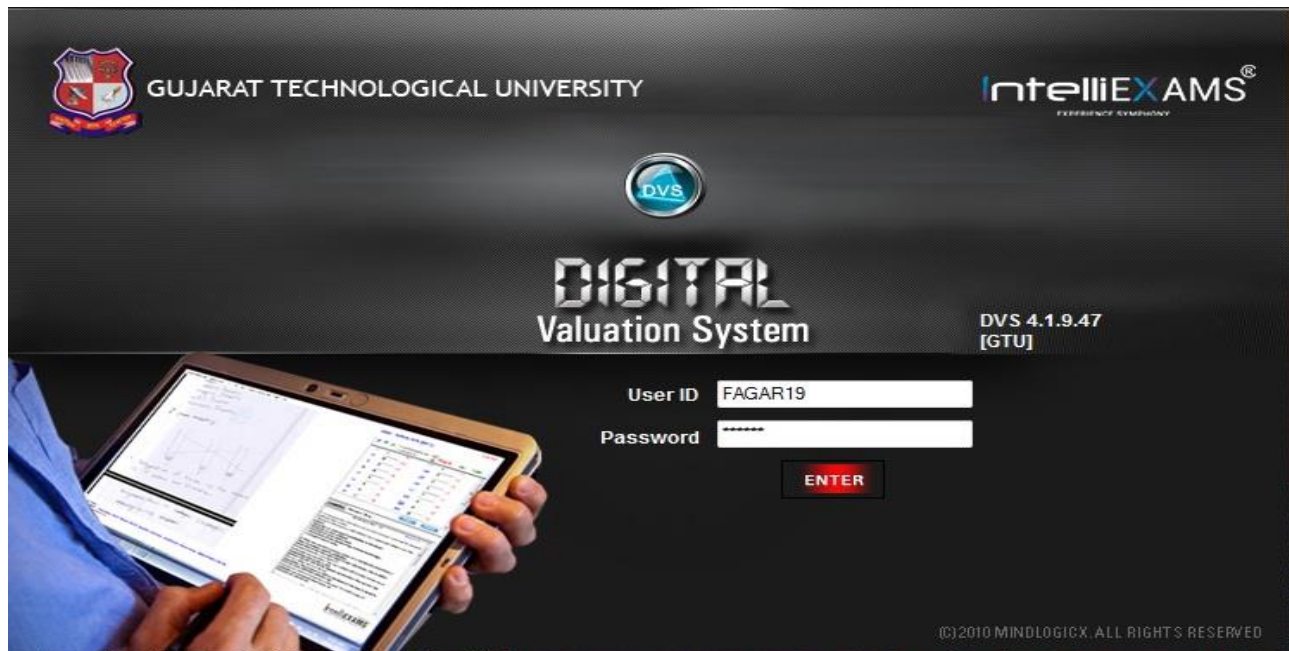
FINANCE AND ACCOUNTS

To keep the online record of Students fees payments:



EXAMINATION

GTU Online E-assessment:





Evaluator Profile

Today's Allocation

Valuation Summary

Start Valuation

Deallocation



WELCOME TO Digital Valuation System

The Digital Valuation System is the first of its kind in the world. The evaluation of answer scripts is done in a secured environment by digitizing the answer scripts first and then enabling the evaluation through our proprietary software application. The process life cycle includes automated dummy number allocation (coding of answer copies), digitizing the answer scripts, online evaluation and mark entry by the faculty, options for accessing answer keys and also moderation and report generation by the Controller of Examination.



The evaluated answer scripts are then stored in a central repository. This further enables providing scanned answer copies to students online for viewing, archival and easier re-evaluation processes. The system is developed to enhance transparency, accountability, reliability and efficiency in the whole evaluation process.

KEY FEATURES

- Secured Evaluation process
- Masking student identity
- Answer scripts retention for longer duration
- No loss of answer scripts due to fire accidents or natural calamities or ageing
- Simultaneous evaluation of one answer script by multiple evaluators
- No chance of inaccuracies in evaluated and totalling of marks
- Easier re-evaluation process
- Easy tracking of evaluation process
- Processing of payment claims

6.2.3 SCREEN SHOTS OF USER INTERFACES

ADMINISTRATION

ONLINE EMPLOYEE SELF SERVICE PORTAL

